

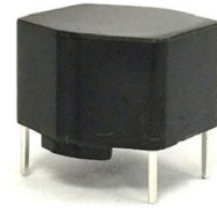
MTC21400 Series (Horizontal type)

Features :

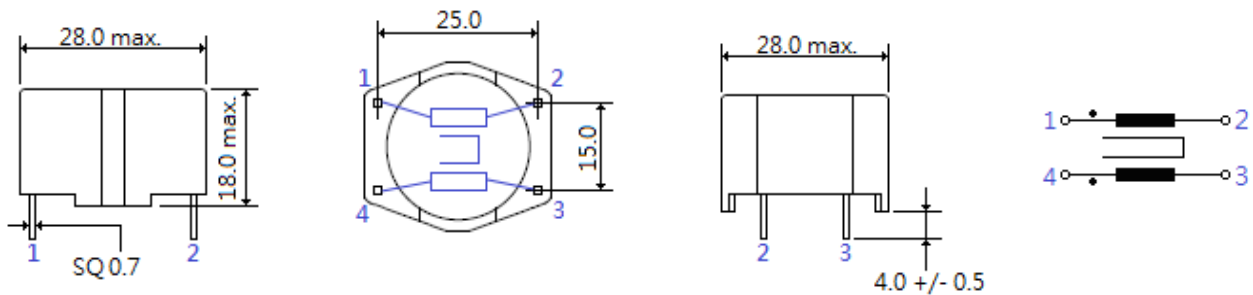
- High safety and reliability.
- Operating temperature range of -25°C to +100°C.
- Excellent frequency characteristic.
- Ferrite core material.
- Compact size, Light weight.

Applications :

- DC-DC converter , Car recharger , Switch-mode power supply
- EMI / EMC Suppressor , TV , Monitor



Shapes And Dimensions : (Unit :mm)



Standard electrical specifications :

Part Number Vertical type	Inductance (L) Per winding	RDC (mΩ) Per winding (typ.)	Rated Current (max.) (A)	Hi-Pot : W1 to W2 (V)
MTC21456-06	0.5mH	11	6.0	1500
MTC21450-07	0.75mH	13	5.7	1500
MTC21451-01	2.7mH	60	4.0	1500
MTC21451	2.7mH	45	4.0	1500
MTC21452-01	3.3mH	65	4.0	1500
MTC21452	3.3mH	75	3.0	1500
MTC21453	5.6mH	170	2.0	1500
MTC21453-01	5.6mH	90	2.4	1500
MTC21454	8.2 mH	200	1.8	1500
MTC21455	10 mH	290	1.6	1500
MTC21456	15 mH	490	1.2	1500
MTC21456	15 mH	325	1.2	1500
MTC21457	27 mH	600	1.0	1500
MTC21458	33 mH	850	0.8	1500
MTC21459	47 mH	1150	0.6	1500
MTC21460	56 mH	2000	0.5	1500
MTC21461	100mH	1400	0.5	1500

- Rated Inductance : measured at 25°C and F @ 10KHz 50mV
- Tolerance: + 50 - 30%
- DC resistance: at 25°C
- Testing voltage 1500V,50Hz ,2 sec,(winding - winding)
- Over temperature of winding < 55°C
- Operating temperature range - 40°C ~ +100°C

Customer's specifications are available

